

BUDGETARY FLOW OF CALIFORNIA STATE FEES AND TAXES DESIGNATED FOR TRANSPORTATION PURPOSES PROPOSED FOR THE 2009-10 FISCAL YEAR

**CALIFORNIA STATE MOTOR VEHICLE FEES AND TAXES
REVENUE TOTAL - \$9,680,845,000**

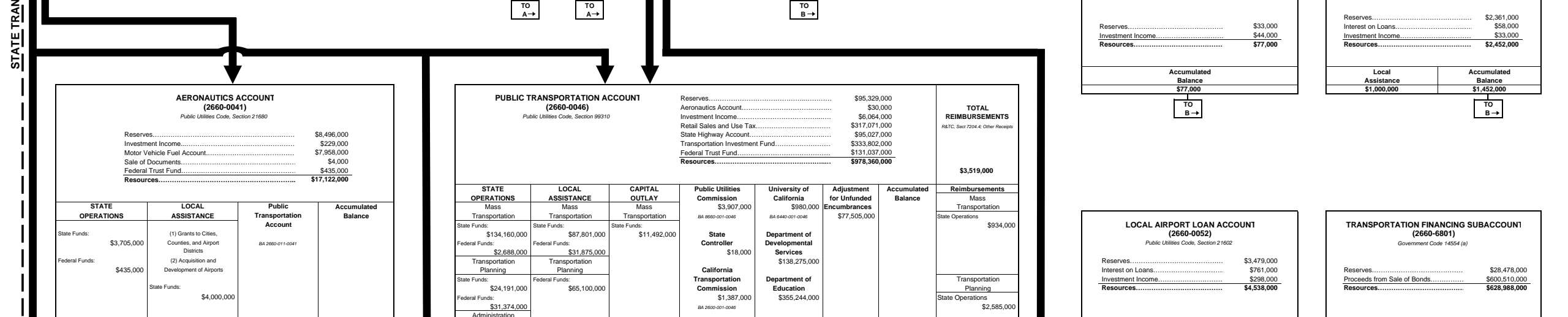
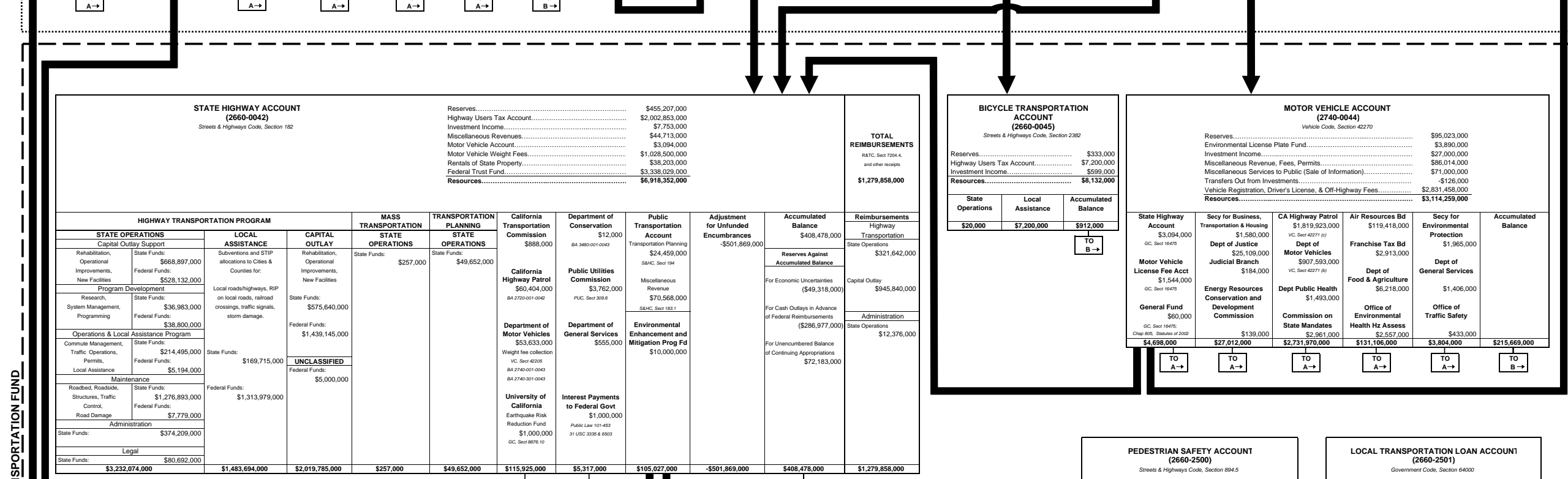
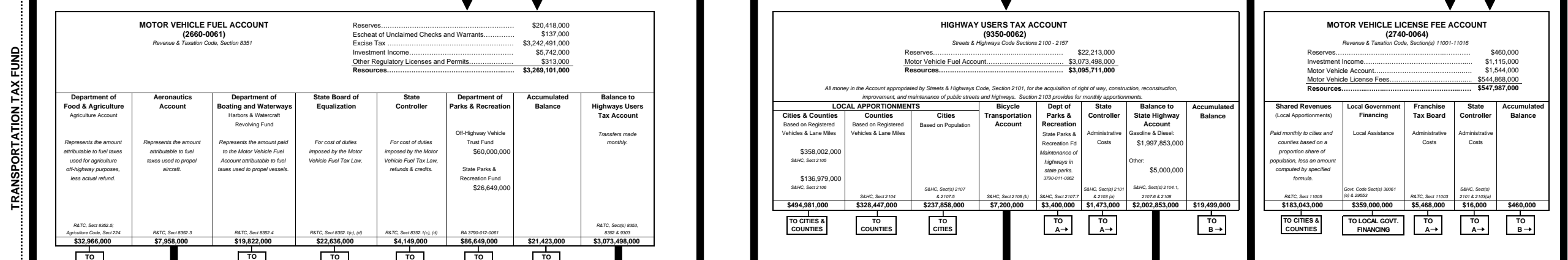
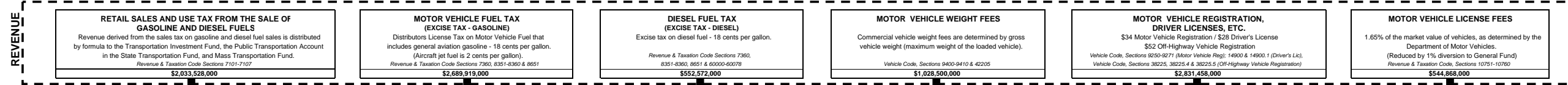
CHART C

STATE OF CALIFORNIA
DEPARTMENT OF TRANSPORTATION
DIVISION OF BUDGETS

(January 2009)

AMOUNTS SHOWN ARE FROM THE PROPOSED
2009-10 GOVERNOR'S BUDGET SUBMITTED TO
THE LEGISLATURE IN JANUARY 2009.

THESE AMOUNTS ARE SUBJECT TO CHANGE
DURING THE LEGISLATIVE BUDGETARY REVIEW
PROCESS.



A OTHER STATE AGENCIES, FUNDS & ACCOUNTS

Air Resources Board	\$372,951,000
California Highway Patrol	\$1,880,327,000
California Transportation Commission	\$3,154,000
Commission on State Mandates	\$2,961,000
Dept of Boating and Waterways	\$19,822,000
Dept of Conservation	\$12,000
Dept of Developmental Services	\$138,275,000
Dept of Education	\$402,691,000
Dept of Finance	\$111,000
Dept of Food and Agriculture	\$39,184,000
Dept of General Services	\$1,961,000
Dept of Justice	\$25,109,000
Dept of Motor Vehicles - Licenses	\$907,593,000
Dept of Motor Vehicles - Weight Fees	\$53,633,000
Dept of Parks and Recreation	\$433,000
Dept of Public Health	\$1,493,000
Energy Resources, Con & Dev Comm.	\$139,000
Federal Government Interest Payments	\$1,000,000
Franchise Tax Board	\$8,381,000
General Fund	\$60,000
Judicial Branch	\$184,000
Office of Environmental Health Assess.	\$2,557,000
Office of Traffic Safety	\$433,000
Public Utilities Commission	\$7,669,000
Secretary for Business, Transp & Housing	\$1,580,000
Secretary for Environmental Protection	\$1,965,000
Secretary for Resources	\$141,000
State Board of Equalization	\$22,636,000
State Controller's Office	\$5,656,000
State Transit Assistance Program	\$350,000,000
University of California	\$1,980,000
TOTAL	\$4,343,707,000

B ACCUMULATED BALANCES

Aeronautics Account	\$8,952,000
Bicycle Transportation Account	\$912,000
EE&M Program Fund	\$1,115,000
Highway Users Tax Account	\$19,499,000
Historic Property Maintenance Fund	\$22,000
Local Airport Loan Account	\$4,538,000
Local Streets and Road Improvement	\$1,452,000
Congestion Relief and Traffic Safety Acct.	\$187,000,000
Motor Vehicle Account	\$215,669,000
Motor Vehicle Fuel Account	\$21,423,000
Motor Vehicle License Fee Account	\$460,000
Pedestrian Safety Account	\$77,000
Public Transportation Account	\$9,769,000
State Highway Account	\$406,478,000
Traffic Congestion Relief Fund	\$29,064,000
Transportation Deferred Investment Fund	\$9,606,000
Transportation Financing Subaccount	\$6,696,000
Transportation Investment Fund	\$327,664,000
TOTAL	\$1,342,396,000

FEDERAL FUNDS DEPARTMENT OF TRANSPORTATION

Aeronautics Account	\$435,000
Public Transportation Account	\$131,037,000
State Highway Account	\$3,338,029,000
TOTAL	\$3,469,501,000

LOCAL APPORTIONMENTS

Cities	\$237,858,000
Counties	\$328,447,000
Cities and Counties	\$678,024,000
Local Govt Financing	\$359,000,000
Local Transportation Funding (Prop.42)	\$667,604,000
TOTAL	\$2,270,933,000

DEPARTMENT ADMINISTRATION (Including Bond debt service)

Aeronautics Account	\$370,000
Bicycle Transportation Account	\$10,000
Corridor Mobility Improvement Account	\$1,071,000
Federal Trust Fund	\$108,983,000
Highway Railroad Crossing Safety Account	\$160,000
Highway Safety, Traffic Reduction, Air Quality, and Port Security Fund	\$11,318,000
Highway Safety, Rehabilitation & Preservation	\$406,000